

PERRY COUNTY



SHERIFF'S OFFICE

2017 ANNUAL REPORT

William R. Barker, Sheriff

PAGE LEFT BLANK INTENTIONALLY

Call Totals for 2017 shows the Daily breakdown for Calls for Service and Reports Taken by Day of Week and the Average Daily Call Volume and Average Daily Reports Taken.

2017 ANNUAL TOTALS								
	SUNDAY	MONDAY	TUESDAY	WEDNESDAY	THURSDAY	FRIDAY	SATURDAY	TOTALS
TOTAL CALLS	1844	2423	2773	2384	2286	2591	2201	16502
TOTAL REPORTS	1124	1492	1728	1498	1287	1500	1321	9950
AVERAGE/DAY	35	47	53	46	44	50	42	
AVERAGE/REPORTS	22	29	33	29	25	29	25	

9-1-1 Calls received by the Perry County Sheriff's Office PSAP

9-1-1 Stats show the Total Calls received from 9-1-1 and the Breakdowns between Landline and Wireless Calls, the Dispatch Position the Calls were answered from (Position 0 is Abandoned Calls or 9-1-1 Hang-Ups) and the Phone Trunk Distribution for the Calls.

2017 ANNUAL 911 STATS					
CALL DATA		POSITION DATA		TRUNK DATA	
TOTAL CALLS	2270	POSITION 0	230	TRUNK 1	1369
LAND LINE	186	POSITION 1	1426	TRUNK 2	1341
WIRELESS	1839	POSITION 2	614	TRUNK 3	1348
COMPLETED	2025			TRUNK 4	1362
ABANDONED	230				

CALL DATA

TOTAL CALLS = TOTAL OF TRUNK DATA

COMPLETED CALLS = LANDLINE + WIRELESS

POSITION DATA – CALLS RECEIVED BY EACH DISPATCH WORKSTATION (2 AT PCSO PSAP)

TRUNK DATA – TOTALS FOR EACH "TRUNK" OR PHONE LINE

Shows the Comparison of the Monthly Calls for Service received and Trending Chart from 2011 thru 2017.

TOTAL CALL VOLUME BY MONTH 2011

JAN	FEB	MAR	APR	MAY	JUNE	JULY	AUG	SEPT	OCT	NOV	DEC	TOTAL
603	617	717	694	908	846	920	863	745	788	810	705	9216

TOTAL CALL VOLUME BY MONTH 2012

JAN	FEB	MAR	APR	MAY	JUNE	JULY	AUG	SEPT	OCT	NOV	DEC	TOTAL
703	751	924	840	910	852	971	885	808	811	795	774	10024

TOTAL CALL VOLUME BY MONTH 2013

JAN	FEB	MAR	APR	MAY	JUNE	JULY	AUG	SEPT	OCT	NOV	DEC	TOTAL
803	590	805	890	780	839	1088	1068	958	950	908	931	10610

TOTAL CALL VOLUME BY MONTH 2014

JAN	FEB	MAR	APR	MAY	JUNE	JULY	AUG	SEPT	OCT	NOV	DEC	TOTAL
988	981	1120	1206	1179	1074	1231	1218	1153	1161	1124	1130	13565

TOTAL CALL VOLUME BY MONTH 2015

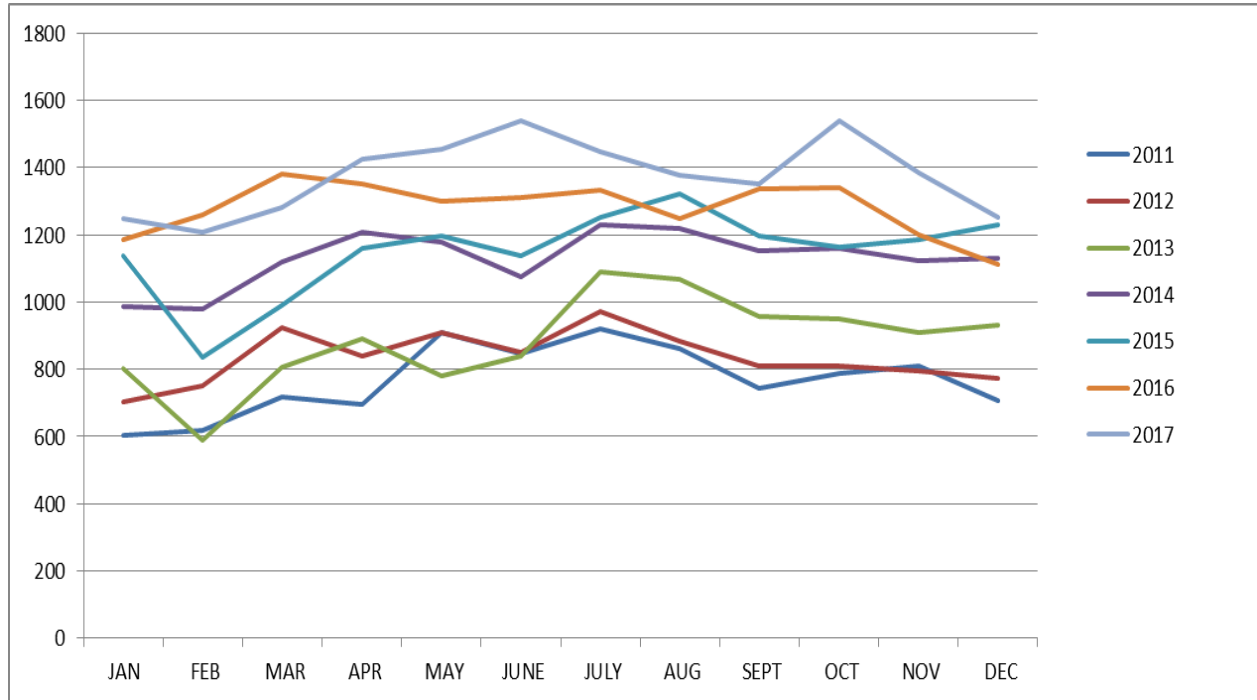
JAN	FEB	MAR	APR	MAY	JUNE	JULY	AUG	SEPT	OCT	NOV	DEC	TOTAL
1137	835	990	1161	1195	1136	1251	1321	1196	1165	1187	1228	13802

TOTAL CALL VOLUME BY MONTH 2016

JAN	FEB	MAR	APR	MAY	JUNE	JULY	AUG	SEPT	OCT	NOV	DEC	TOTAL
1185	1258	1382	1353	1301	1312	1334	1249	1338	1339	1201	1112	15364

TOTAL CALL VOLUME BY MONTH 2017

JAN	FEB	MAR	APR	MAY	JUNE	JULY	AUG	SEPT	OCT	NOV	DEC	TOTAL
1248	1206	1282	1423	1455	1539	1446	1377	1352	1538	1383	1253	16502



Compares 2011 to 2017 Calls For Service where Change shows the Percentage of Increase/Decrease between 2016 & 2017 and 7 Year Change shows the Percentage of Increase/Decrease between 2011 and 2017.

2011 - 2017 CALL COMPARISON

ANNUAL TOTALS

	2011	2012	2013	2014	2015	2016	2017	CHANGE	7 YEAR CHANGE
TOTAL CALLS	9216	10024	10610	13565	13802	15364	16502	7%	44%

In 2014, in addition to Jail Transports several other new Nature Types were added for tracking by the Sheriff's Office. While these Nature Types were performed by the Deputies and Dispatchers in the past, they were tracked differently though the CAD System and not accounted for in previous years totals. 2014 gives a more accurate look at the duties performed by the Sheriff's Office.

Shows the Calls for Service that the Perry County Sheriff's Office handled in 2017.

NATURE	NATURE TOTAL
9-1-1 TRANSFER	32
911 HANG UP	87
911 TEST	11
ABDUCTION - KIDNAPPING	5
ACCIDENT (HIT SKIP)	31
ACCIDENT (INJURY)	84
ACCIDENT (PROPERTY DAMAGE)	186
ACCIDENT-DEER	74
ACCIDENTAL OVERDOSE	27
ALARM DROP	407
ALARM DROP COMMERCIAL	68
ALARM DROP RESIDENTIAL	55
ANIMAL AT LARGE	38
ANIMAL CALL	249
ASSAULT	83
ASSIST OTHER UNIT	359
ASSIST OTHER UNIT EMERGENCY	3
ASSIST OTHER UNIT LEADS ENTRY	11
ASSIST RECEIVED BY OTHER	1
ASSIST VILLAGE L.E.	58
ASSIST VILLAGE L.E. EMERGENCY	5
ASSIST OTHER UNIT - EMS	91
ASSIST OTHER UNIT - FIRE	24
ATF BACKGROUND CHECK	3
BACKGROUND CHECK	157
BAD CHECKS / FORGERY	8
BOMB THREAT	1
BREAKING/ENTERING	119
BURGLARY	77
BURGLARY IN PROGRESS	14
CCW PERMIT	560
CHILDREN SERVICES COMPLAINTS	93
CIVIL PROCESS	96
COMPLAINT	659
CRIMINAL DAMAGING	138
DEAD ON ARRIVAL	41
DEER DISPATCH	31

DISABLED VEHICLE	237
DISASTER SIREN ACTIVATION	1
DISASTER SIREN TEST	6
DOG BITE	3
DOG WARDEN COMPLAINT	23
DOMESTIC DISPUTE	100
DOMESTIC DISPUTE-INACTIVE	13
DOMESTIC VIOLENCE-INACTIVE	87
DOMESTIC VIOLENCE	141
DROWNING	1
DRUNK	73
EMERGENCY NOTIFICATION	12
EMPLOYEE BACKGROUND CHECK	3
ESCAPE OR JAIL BREAK	3
ESCORT OR PARADE	12
EVIDENCE DESTRUCTION ORDER	1
EVIDENCE FORFEITURE ORDER	6
EXTRA PATROL	230
FAILURE TO REGISTER	3
FIGHT	47
FIRE	4
FIREARM - SAFEKEEPING	1
FIREARMS QUALIFICATION	3
FIREWORKS	3
FLOOD EMERGENCY	1
FOLLOW UP	32
FUNERAL ESCORT	11
GAS LEAK (OUTSIDE)	1
GUN SIEZURE COURT ORDER	16
IDENTITY THEFT	23
INFORMATION ONLY	44
INTERNAL INVESTIGATION	36
JUNK VEHICLE DISPOSAL	2
JUVENILE - RUNAWAY	40
JUVENILE - UNRULY	94
JUVENILE - CUSTODY DISPUTE	86
JUVENILE-MISSING	11
JUVENILES	66
LARCENY	305
LARCENY OUT OF VEHICLE	42

LEVEL 1 SNOW EMERGENCY	2
LITTER COMPLAINT	134
LIVE STOCK ON ROADWAY	27
LOG NOTE	68
LOST / FOUND PROPERTY	50
MAN WITH GUN	14
MAN WITH KNIFE	8
MENACING	10
MENTAL	85
MISSING PERSON	23
MISSING PERSON FOUND	5
MISSING PERSON SEARCH	6
MONEY ESCORT	11
NARCOTICS	80
NARCOTICS METH LAB	1
NARCOTICS TASK FORCE	123
NATURE UNKNOWN	47
NEIGHBOR TROUBLE	19
NEIGHBOR TROUBLE - INACTIVE	45
NOISE COMPLAINT	58
NOTIFICATION - WELL BEING CHECK	313
OPEN DOOR	34
OPEN WINDOW	1
OTHER AGENCY PROTECTION ORDER	6
OTHER DOCUMENTS-NOT BAD CHECKS	2
PARKING VIOLATION	16
PHONE HARASSMENT	8
PO VIOLATION-COMMON PLEAS	32
PO VIOLATION-COUNTY COURT	11
PRESCRIPTION DROP BOX	1
PROTECTION ORDER	17
PROWLERS	54
PUBLIC INTERACTION EVENT	97
RADIO TEST	14
RAPE	9
RECOVERED STOLEN OTHER AGENCY	14
RECOVERED STOLEN PROPERTY OTHER	2
RECOVERED STOLEN PROPERTY	20
RECOVERY STOLEN/WANTED VEHICLE	5
REPOSSESSION	77

REQUEST K-9	5
ROAD CLOSED	7
ROBBERY	5
SCHOOL RESOURCE COMPLAINT	18
SEARCH WARRANT	1
SERVICE RUN-FIRE	2
SEX OFFENDER TIER 2	2
SEX OFFENSE	25
SHOOTING	4
SHOPLIFTER	3
SHOTS FIRED	39
SNOW EMERGENCY	2
SOMEONE EXPOSING THEMSELVES	2
SPECIAL DETAIL	17
SQUAD RUN	10
STABBING OR CUTTING	1
STAFF MEETING/TRAINING	3
STAND-BY	1
STOLEN CAR	76
SUBPEONA	19
SUICIDE	3
SUICIDE ATTEMPT	82
SUICIDE ATTEMPT OVERDOSE	18
SUSPICIOUS CAR	526
SUSPICIOUS PERSON	361
THREATS OR HARASSMENT	262
TRAFFIC DETAIL	11
TRAFFIC JAM OR ROADBLOCKED	17
TRAFFIC OFFENSE	1091
TRANSFERRED CALLS	43
TRANSPORT CONVEYANCE	55
TRANSPORT JDC	108
TRANSPORT OTHER COUNTY	129
TRANSPORT REMOVAL	100
TRANSPORT SEORJ	706
TRASH/DUMPSTER FIRE	1
TRESPASSING COMPLAINT	170
UNAUTHORIZED USE OF VEHICLE	23
UNDER-SPEED VEHICLE INSPECTION	1
UNLOCK	36

USE OF FORCE	20
USE OF K-9	42
VANDALISM	46
VEHICLE FIRE	7
WANTED VEHICLE	5
WARRANT ARREST	366
WORK ORDER	1
GRAND TOTAL	11830

Crime Stats for Violent and Theft/Burglary Related Crimes

Compares 2013 thru 2017 with Change indicating the Percentage of Increase or Decrease between 2016 & 2017 Calls. 2012 Calls are provided as a reference. These Natures are based on Dispatch Information at the Time of Call and that some of these calls are handled by Local P.D. if they are on Duty in their respective Villages since the PCSO handles the Dispatching for these calls.

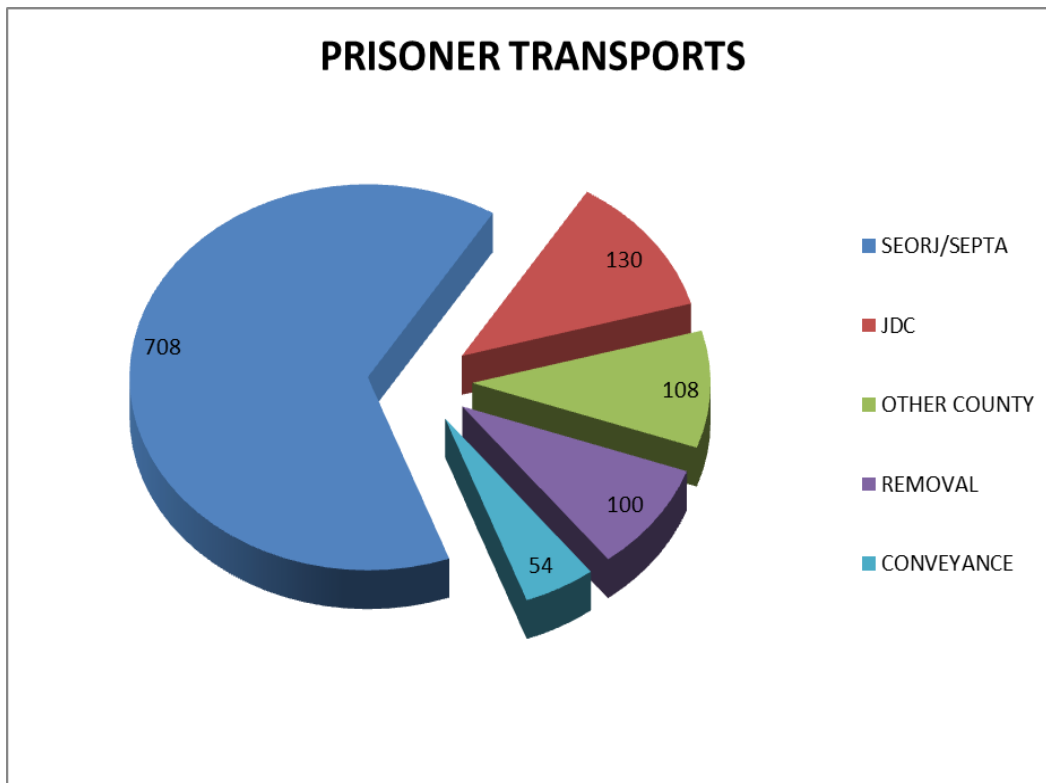
2017 THEFT CRIMES							
	2012	2013	2014	2015	2016	2017	CHANGE 2016/2017
BURGLARY	184	132	102	140	116	91	-22%
BREAKING & ENTERING	155	131	106	105	98	119	21%
LARCENY	436	401	377	380	345	304	-12%
IDENTITY THEFT	31	25	42	52	32	23	-28%
LARCENY OUT OF VEHICLE	-	-	29	63	52	42	-19%
GAS DRIVE OFF	-	-	0	1	2	0	-100%
SHOPLIFTER	-	-	1	4	7	3	-57%
ROBBERY	5	7	4	4	7	5	-29%
STOLEN CAR	48	48	53	63	67	76	13%
UNAUTHORIZED USE	13	19	20	15	28	23	-18%
TOTALS	872	763	734	827	754	686	-9%

2017 VIOLENT CRIMES							
	2012	2013	2014	2015	2016	2017	CHANGE 2016/2017
ASSAULT	112	109	99	103	88	83	-6%
DOMESTIC VIOLENCE	149	211	173	184	183	228	25%
DOMESTIC DISPUTE	155	104	84	77	117	113	-3%
NEIGHBOR TROUBLE	43	38	47	44	56	64	14%
FIGHT	67	68	61	73	50	47	-6%
RAPE	5	0	8	5	8	9	13%
SHOOTING	11	6	7	4	5	4	-20%
STABBING	3	2	1	1	1	1	0%
HOMICIDE	0	0	1	2	1	0	-100%
TOTALS	545	429	481	493	509	549	8%

2017 JAIL TRANSPORTS

The Perry County Sheriff’s Office is responsible for Transporting prisoners for Court appearances and to Prison.

2017 PRISONER TRANSPORTS			
JAN 1 TO DECEMBER 31 2017			
	No. Made	%	Total Miles
SEORJ/SEPTA	708	64%	33,967.20
OTHER COUNTY	130	12%	10,442.60
JDC	108	10%	5,815
REMOVAL	100	9%	12,400.30
CONVEYANCE	54	5%	7,422



2017 CIVIL STATISTICS

The Civil Division of the Perry County Sheriff's Office is responsible for the processing and tracking of Court documents (subpoenas, Protection Orders, Jury Notices, Civil Hearings, etc.) to be served by Sheriff's Deputies in addition to processing and entering of Warrants and Sheriff's Sales.

TOTAL COURT PAPERS SERVED	1355		
TOTAL COURT PAPERS FAILED	499		
TOTAL WARRANTS SERVED	605		
COURT PAPERS MILES TRAVELED	33,565		
WARRANTS MILES TRAVELED	13,367		
WARRANTS TO REMOVE	105	MILEAGE	10,114
WARRANTS TO CONVEY	55	MILEAGE	6,394
SHERIFF'S SALES	153		
CONCEAL CARRY PERMITS	404 INITIAL		
	153 RENEWALS		
CIVIL PROTECTION ORDERS SERVED	183		

2017 STATISTICS FOR CODE T.F. / PERRY COUNTY

These stats are taken from records recorded by the Perry County Sheriff's Office. These stats may be different than what is on file at the Task Force's main office as some cases were not reported to the TF main Office.

2017 Drug Investigations

Total Cases	109	
Arrests	94	with 125 charges filed
Felony Charges	82	
Misdemeanor Charges	43	

The following is a breakdown of the types/amounts drugs and assets seized in 2017 by the drug task force in Perry County:

Cocaine	0.23 grams
Fentanyl	2.61 grams
Heroin	4.2 grams
Marijuana	104,471.1 grams
Methamphetamine	153.21 grams
MDMA	8 grams
Prescription Drugs	225 Unit Doses
Meth Labs	4
Currency	\$59,919.00

Street Value of Drugs Seized in 2017 \$591,957.50

2017 CASE INVESTIGATIONS

General Case Investigations

General case investigations are handled by a dedicated Sgt. Investigator for the Office. These are cases that require more in depth investigation than those cases normally handled by the Road Deputy's.

2017 saw a decline in cases assigned to the Sergeant Investigator. In 2016 a total of 150 cases were assigned to the Sergeant Investigator; however in 2017 only 110 cases were assigned. In turn 2017 yielded more complex cases that require more time to investigate resulting in fewer new cases being produced. We still have 23 cases that remain under investigation leaving 87 cases that have been closed /cleared. 33% of the cases investigated were presented to the Perry County Prosecuting Attorney's Office. 50% of those cases were Felony level offenses resulting in multiple charges to multiple suspects.

The General Case Division executed a total of 17 search warrants in Perry County for Felony level offenses to include property crimes, sexual assault crimes, assistance to other agencies, and crimes of violence.

The General Case Division recovered \$95,712 dollars' worth of stolen property in 2017. The property recovered consisted of information obtained by citizens, execution of search warrants, investigation, and Officer Reports.

In conclusion, it is difficult to solve property crimes (Burglary, Theft) when there is very little information to continue an investigation. It is important for the general public to log make, model, serial numbers and owner applied number to all items of value in their home. It is also important when completing a theft report to provide as much detail about the item reported missing as possible. If this information is provided to a responding Deputy or Investigator the chance(s) of solving the case, or recovering the property increase significantly.

Cases Cleared	51	Value of Stolen Property Recovered	\$95,712.00
Cases still Open	23		
Cases Closed	36	General Case Search Warrants Executed	17
Total Cases	110		

2017 Children Services Investigations

In 2016, The Perry County Sheriff's Office & Perry County Children Services were able to place a Deputy with Children Service's to assist with investigations.

Total Cases	129	
Closed	94	
Still Open	14	
Charges Pending	12	
Arrests	9	
Charges		
Rape		3
Domestic Violence		1
Drug Possession		1
Child Endangering		3
Failure to report Abuse/Neglect		1

2017 Litter Investigations

The Perry County Sheriff's Office provides a Deputy that works CLFP Solid Waste District for Perry County. This Deputy is funded by monies generated by local landfills.

Cleared	7
Open	9
Closed	113

Cleared – Cases that have been presented for formal charges or have been charged.

Open – Cases that remain under investigation.

Closed – Cases that have been closed out due to lack of evidence, no suspect or other issues that prevent prosecution.

2017 I.D.E.P./S.T.E.P GRANT

In 2017, the Sheriff's Office received a grant from the State of Ohio for 2 programs, Impaired Driver Enforcement Program (I.D.E.P.) & Selective Traffic Enforcement Program (S.T.E.P.). We qualified for these grants due to the number of traffic crashes and fatalities in Perry County in 2016. There were 5 traffic fatalities in 2016, and in 2017 there were 2. The following are the results for the 2017 grant.

Hours Worked	699
Total Traffic Stops	527
OVI Under 21	3
OVI Over 21	9
Refusals	1
Adult Restraint	33
Child Restraint	1
Speed	29
Driving Under Suspension	51
No Operator's License	7
Felony Arrests	18
Other Citations	121

OHIO COLLABORATIVE

On November 13th 2017, the Perry County Sheriff's Office was awarded certification by the Ohio Collaborative Community-Police Advisory Board for the adoption & implementation of state standards for:

1. Use of Force
2. Use of Deadly Force
3. Agency Employee Recruitment & Hiring
4. Body Worn Cameras
5. Community Engagement
6. Law Enforcement Telecommunicator Training

2017 Reporting related to Collaborative Standards

Use of Force - 20

Community Engagement (Public Interaction Event) – 97

The Office will be required to submit compliance documentation every year prior to the anniversary of our certification and will undergo an audit every 3 years to show compliance.